

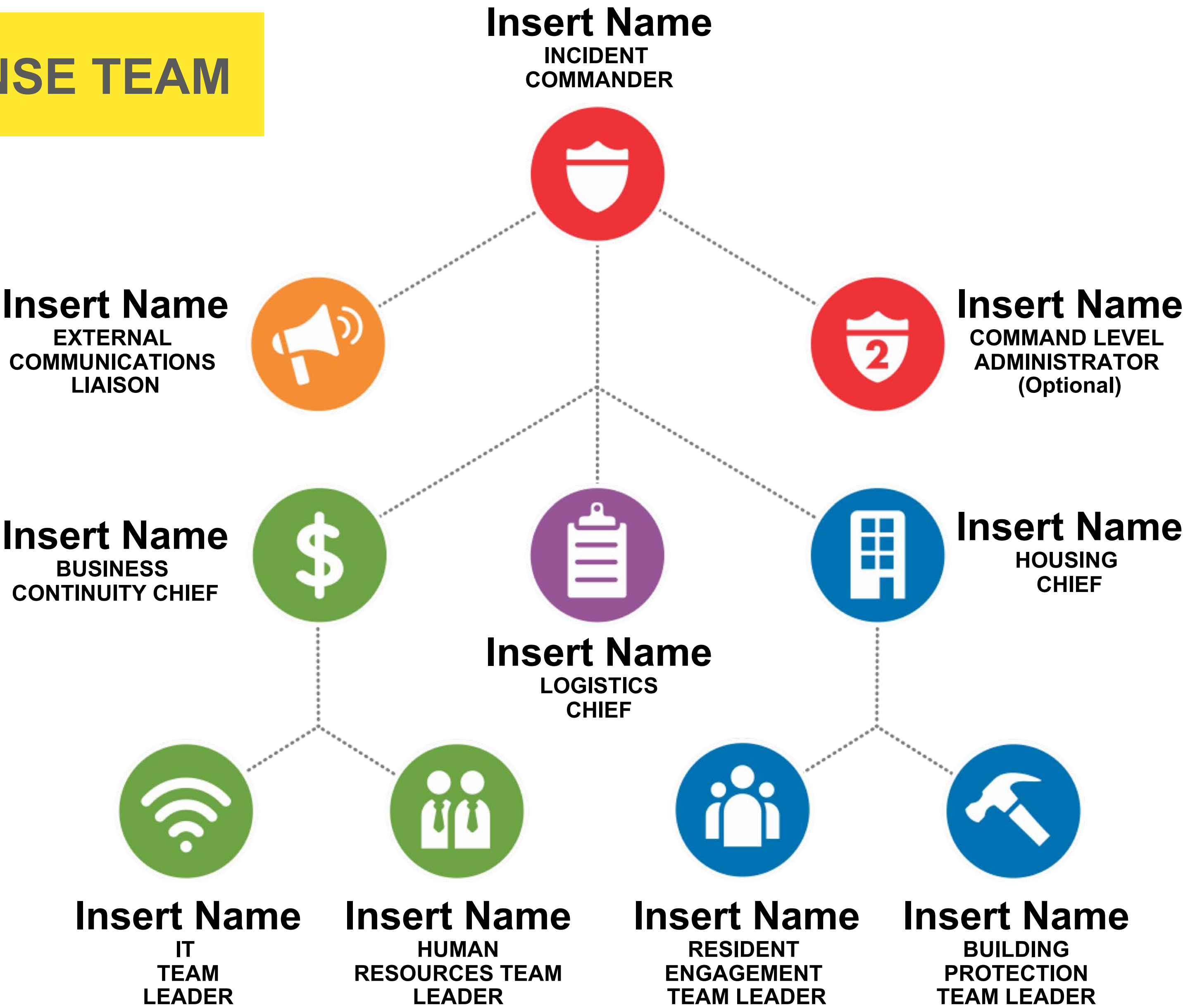
Ready to Respond Tabletop Exercise





Welcome

OUR RESPONSE TEAM



A grayscale photograph of a group of people sitting around a large table in a meeting room. The room has posters on the wall and various items on the table. A large, bold, yellow text overlay reads "What is a Tabletop?". The text is centered and spans most of the width of the image. Above and below the text are horizontal bars with a yellow diagonal hatching pattern.

What is a Tabletop?

Training for real life disaster

Tests our ability to respond.

Includes a simulated disaster scenario.

Tests the strength of our *Job Action Packets*.

Let us practice communication between roles.



TODAY'S AGENDA

9:00 a.m.	Introduction
9:30 a.m.	Review of Tools
10:00 a.m.	BREAK
10:15 a.m.	Disaster scenario
11:30 a.m.	Discussion
11:45 a.m.	Next steps